

# *Underground Tank Installation*

## Step 1.

Excavate hole. Over-excavate minimum 100mm on each side of tank. In high water table areas place sub-surface drain to relieve hydrostatic pressure. Place leveling layer of 50-100mm of sand.



## Step 2.

Place CANAL heavy-duty line. For triple modules, maximum tank width 4.2m, to suit CANAL 7.6m roll width.



## Step 3.

Place modules. CANAL to base and sides only, place geotextile over top of tank, 100mm minimum roll overlaps.



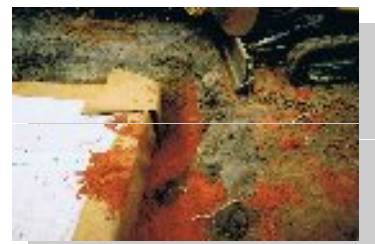
## Step 4.

Backfill around tank with sand.

Note: Fit 2 no. PVC standpipes through top of tank for connection of rainwater inlet pipe and second standpipe for tank overflow. Also fit pump suction line through standpipe.



Note: simple folded corner on CANAL liner, no welds or joins required.



Step 5. Backfill with free draining material on sides and top of tanks. Minimum top cover for pedestrian 300mm ,for vehicles 500mm of compacted crushed rock.

