

Southern Geosynthetic Supplies Pty. Ltd.

P.O. Box 885
 Eltham, VIC 3095
 Mobile: 0419 478 238
 P 03 9444 7971

Fax: 03 9444 7972
 www.geosynthetics.com.au
 Email: wayne@geosynthetics.com.au

We're on the web!
 www.geosynthetics.com.au

Southern Geosynthetic offers a full range of erosion control products including SuperGro®, SiltStop® silt fences, Silt Curtains and now Silt Sausage™.



ProPex® Beats Stabilisation Hands Down!

Don't believe us? That's the conclusion according to a new student technical paper entitled "Investigation of Lime Stabilisation Vs. Geotextiles.."

The costs of constructing pavements on varying soft subgrades were considered as well as investigating actual projects constructed with ProPex woven geotextile and "The use of a geotextile remains the most cost effective option for CBR values in the range of 2 to 8".

Geotextile pavement design was carried out utilising Amoco's RACE program, which is available free of charge.

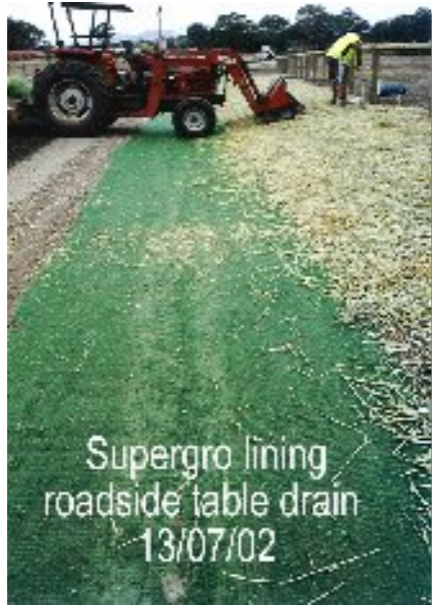
As well as the clear initial economic benefits ProPex is also not hazardous to handle and ProPex is a long term solution, unlike lime which may leach out over the long term and is difficult to mix uniformly potentially causing block cracking. Specify ProPex for the best result every time!



SUPERGRO® GREENS AUSTRALIA !

Versatile Supergro is the ideal choice for all revegetation projects. The Albury-Wodonga Development Corporation (AWDC) has used Supergro extensively throughout its' own developments including the Felltimber Estate at Wodonga. Environmental protection is a big consideration and to this end the AWDC pays special attention to erosion control and establishing vegetation growth prior to handing over the lots for home building. Over many years the group has used and tested many different

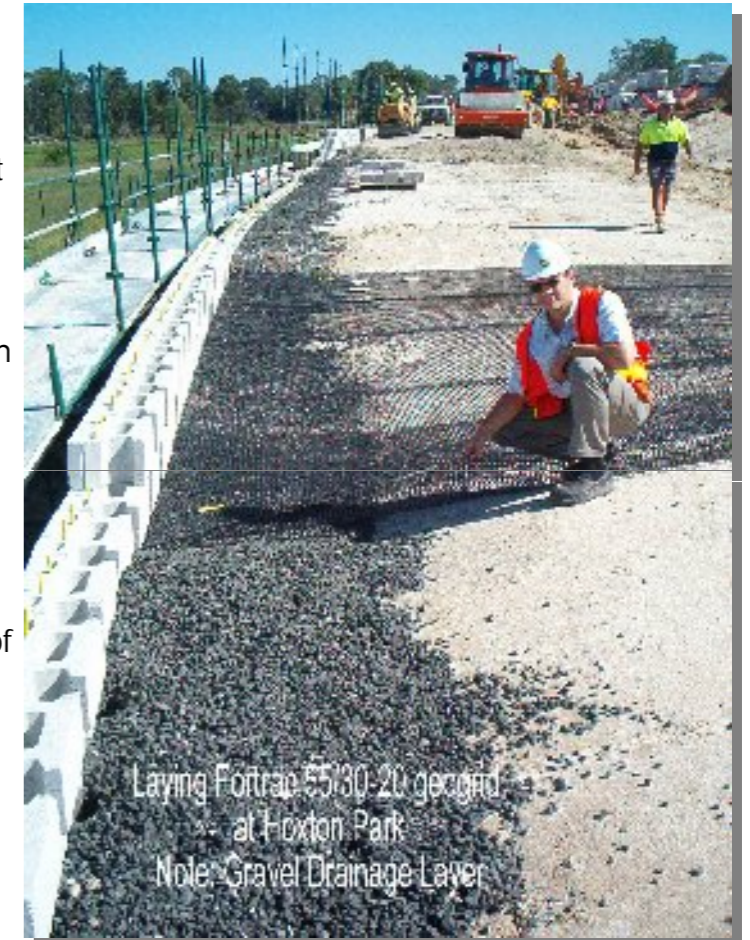
products including straw mulch and other matting products including the popular locally-made wood-fibre mat Enviromat. However Supergro has proven the best product for erosion control and promoting grass growth. Specify Supergro on your next project for the best result!



SGS NEWS

FORTRAC-KEYSTONE WALLS

The new \$1.6 billion Western Sydney Orbital, or "Westlink M7" as it is now known, will stretch over 40km along the western edge of Sydney. With over 190 bridge structures, retaining walls are a major feature of the project and Boral Masonry won the Design & Supply contract for supply of the Keystone segmental concrete block system. Boral chose Fortrac polyester geogrid for the soil reinforcement due to its high long term design strength which results in the most efficient design and cost savings. Installer UCBC commented on the ease of laying Fortrac compared with other stiffer HDPE grids. Interestingly wall backfill material is being sourced from the major tunneling projects around Sydney, the crushed sandstone has a high friction angle and is ideal for this application. Over 100,000sqm of Fortrac 55 and Fortrac 80 are being used throughout the project on walls up to 4m height, making this the largest retaining wall contract in Australia to date.

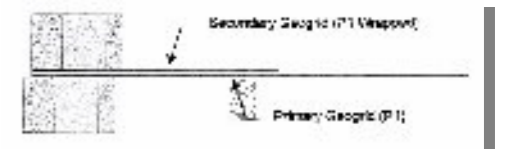


DOUBLE-LAYER FORTRAC CONNECTION



Geogrid reinforced segmental concrete block retaining walls are becoming ever more popular and Fortrac manufacturer Huesker has developed a simple, yet effective way to increase the connection strength – the patented "Double Layer Connection". The concept is simple – Fortrac geogrid is simply doubled over at the block to improve the pull-out strength at this point. Testing has proved increased connection strength of up to 100%. This dramatic improvement in performance

can result in real cost savings. Contact us now for copies of test results.



HUGE STORMWATER RE-USE TANK

The continuing drought has brought home the message of the value of water. Hobsons Bay City Council engineers saw the potential to incorporate a stormwater re-use tank in the recent Altona Green subdivision development at Altona Meadows. In this innovative approach a 400,000 Litre underground tank was formed with Atlantis Matrix triple modules. To ensure the integrity of the tank, the Matrix modules were surrounded by a plastic liner. Stormwater is captured in roadside swale drains and directed into the underground tank to be pumped out later for irrigating the adjoining sports field. With a ready source of water the council is no longer at the mercy of water restrictions!

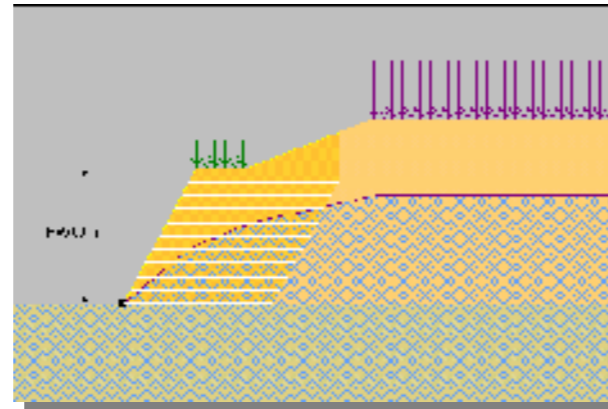
The new Matrix 2 modules feature an increased crush strength of over 26 tonne/sqm which makes them suitable for use under heavily trafficked areas. The modules are quickly and easily assembled without any special skills or heavy lifting gear and the modular structure allows them to be placed to fit any tight site, even a triangular one such as this site. Matrix modules are ideal for all stormwater detention, retention/re-use or infiltration applications. Contact us now for the new design software CD's which are available free of charge.



REINFORCED SLOPE DESIGN SOFTWARE

Huesker has just released new software for the design of geosynthetic-reinforced slopes, incorporating Fortrac geogrid. The program is based on the popular Re-slope program from Dr Dov.Levsinski from Delaware University. The program is a very powerful design tool and can model terraced slopes and multiple surcharge loads.

Contact us now for a free lunchtime presentation.



TULLAMARINE TAXIWAY INSPECTION

One of the most popular applications of HaTelit asphalt reinforcement grid worldwide is on airport runways. Long term application at major airports including Londons Luton Airport and Brussels Airport confirm the ability of HaTelit to reduce cracking and extend the life of asphalt by a factor of 4. Locally HaTelit and the new improved HaTelit C have been used at Tullamarine, Sydney and Cairns Airport and also at Lae in PNG. The composite structure of HaTelit C ensures ease of placement, without the need for special fixing to the surface like competitors products. The strong 50kN/m polyester grid provides reinforcement and is not heat sensitive like other products.

More than 10 years after the trailing of numerous treatments the taxiway at Melbourne Airport was inspected in December 2002 and to date all tested sections are performing well.



GREEN GRASS VS. CRAPPY CONCRETE

The new Atlantis Turfcell is radically different from any other grass-paving product you may have seen. It's high strength allows heavy traffic loading and the open structure promotes lateral and vertical root growth. For the best results Turfcell is laid on a special free-draining base and a tough, spreading type of grass, such as KyKuyu is used.

Turfcell is suitable for driveways subject to low to medium volume traffic, around 2 to 6 passes per day. Typical applications include access roads, fire access roads, driveways, overflow parking bays and visitor parking in retirement villages.

The largest grass paving project yet seen is now under construction at the State Hockey Centre at Brens Drive, Parkville. 1500sqm of Turfcell is being laid by Devon Gardens Landscape Constructions for use as an overflow carpark.

A locally available free-draining basecourse was placed first, overlaid by a non-woven separation geotextile. A 50mm clean sand was then placed as a bedding layer for the cell, which was over-filled with a sandy loam. Finally kykuyu seed was spread

over the finished structure. Turfcell is the ideal alternative to bitumen or concrete "hard" surface paving, but don't take our word for it, put our claims to the test and drop by the site to see for yourself!



NIDDRIE QUARRY REDEVELOPMENT

Stormwater treatment is a key element of the Niddrie Quarry redevelopment, north of Melbourne, constructed by BMD during 2003. Stormwater is directed to a large 4.5 Ha wetlands for settling out of silt and treatment by macrophytes over a 1 year cycle. ProPex 4552 was extensively used under rock rip-rap to prevent erosion of steep, 1:1 batter, 4m high earthen bunds around the perimeter of the storage. For access tracks super-strong 80 kN/m woven ProPex 6086 was used to stabilise soft areas.



NEW TERRAM PAVING FABRIC

The western suburbs of Melbourne are well known for their expansive soils which make road maintenance a nightmare. Brimbank council has found a solution to reflective cracking to asphalt overlays by incorporating a non-woven paving fabric beneath the overlay. Terram B15 is a 150gsm nonwoven polyester geotextile ideal for use in chip seals or asphalt overlays. Rolls are manufactured in widths to suit the roadway, typically between 3.5 and 4.0m. The longer 300m rolls reduce downtime between roll changes.

